

# Choosing a gorse control program for your situation



## CHAPTER 3

# Chapter 3

## Choosing a gorse control program for your situation

Develop a gorse control program based on the type of land or infestation you need to treat and the options you have available to you. This chapter has been divided into sections detailing your choices of gorse control programs for different situations.

Before you follow any of these programs it is important that you:

1. Develop a five year gorse control plan (refer to section 2.4 for detailed instructions)
2. Work out your primary control and follow-up methods
3. Prevent further seed spread (refer to section 2.5).

### 3.1 Steep or stony pasture

Use the flowchart for steep or stony pasture to work out a gorse control program. Follow the steps in the flowchart in the sequence that they are written down. Remember these key points when controlling gorse on steep or stony pasture:

- Prevent further seed spread
- Wait at least 12 months before burning sprayed gorse
- Heavy stocking will improve results
- Sowing pasture and fertilising improves results
- Use local/expert knowledge when establishing pasture
- Follow-up treatment of gorse regrowth and seedlings is essential.

Refer to the case study in section 4.3 where a gorse infestation on stony pasture was effectively dealt with.

### 3.2 Arable pasture

If you plan to control gorse in arable pasture, use the arable pasture flowchart to work out a gorse control program for your site. Follow the steps in the flowchart in the sequence that they are written down. Observe these key points when controlling gorse in arable pasture:

- Prevent further seed spread
- Wait at least 12 months before burning sprayed gorse
- Heavy stocking will improve results
- Sowing pasture and fertilising improves results
- Use local/expert knowledge when establishing pasture
- Follow-up treatment of gorse regrowth and seedlings is essential.

Refer to case studies that effectively dealt with gorse infestations in these conditions: sections 4.1, 4.2 and 4.4.

### 3.3 Native vegetation

The flowchart for native vegetation outlines some gorse control programs for infested bush. Follow the steps in the flowchart in the sequence that they are written down. Key points for controlling gorse in native vegetation are:

- Prevent further seed spread
- Exclude fire from the area
- Avoid all soil disturbance
- Be careful when using herbicides around stringy bark/messmate – these plants are very sensitive to herbicides
- Follow-up treatment of gorse regrowth and seedlings is essential.

Refer to case studies that effectively dealt with gorse infestation in these conditions: section 4.6 and 4.7.



### 3.4 Riparian zones

If you plan to control gorse on stream banks, use the riparian zone flowchart to work out a gorse control program suited to your site. Follow the steps in the flowchart in the sequence that they are written down. Observe these key points when controlling gorse in riparian zones:

- Seek expert advice - (Primary Industry staff and Riparian Habitat Management Guide, available from [http://www.weedscrc.org.au/documents/hmg\\_riparian.pdf](http://www.weedscrc.org.au/documents/hmg_riparian.pdf)).
- Prevent further seed spread
- Check if your state or region requires you to have a permit before working on stream banks (see Section 5.9)
- Maintain good vegetative cover. Erosion is much harder to control than gorse
- Only use herbicides registered for use around waterways
- Work from upstream to downstream<sup>1</sup>
- Work on a manageable section at a time, not on large continuous sections<sup>1</sup>
- Avoid spring or summer works to protect habitat
- See section 5.8 for guidelines for using herbicides in riparian zones
- Follow-up treatment of gorse regrowth and seedlings is essential.

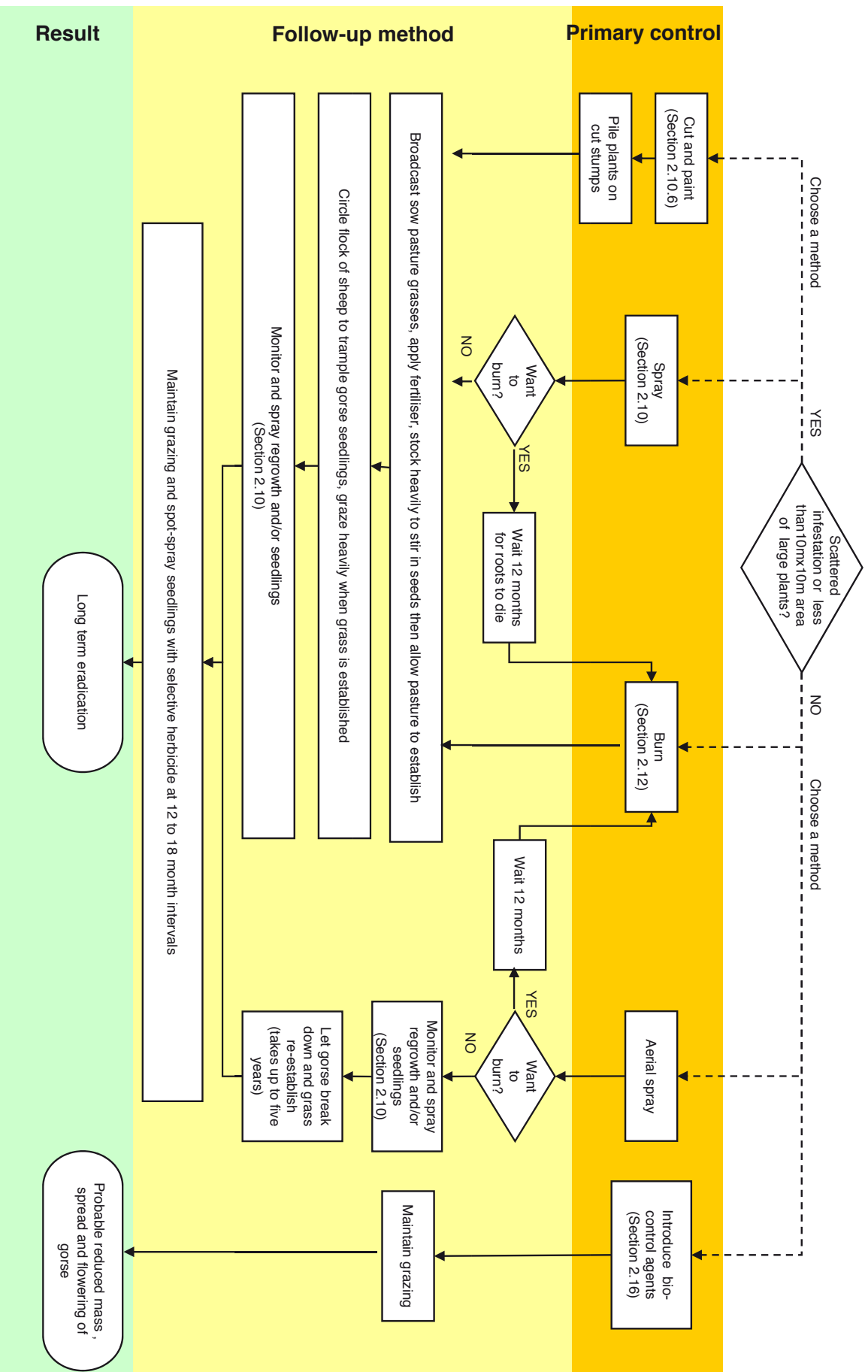
Refer to case studies that effectively dealt with gorse infestation in these conditions: Section 4.8 and 4.9.

Don't take on more than you can follow-up.  
Break the work into manageable sections

### References

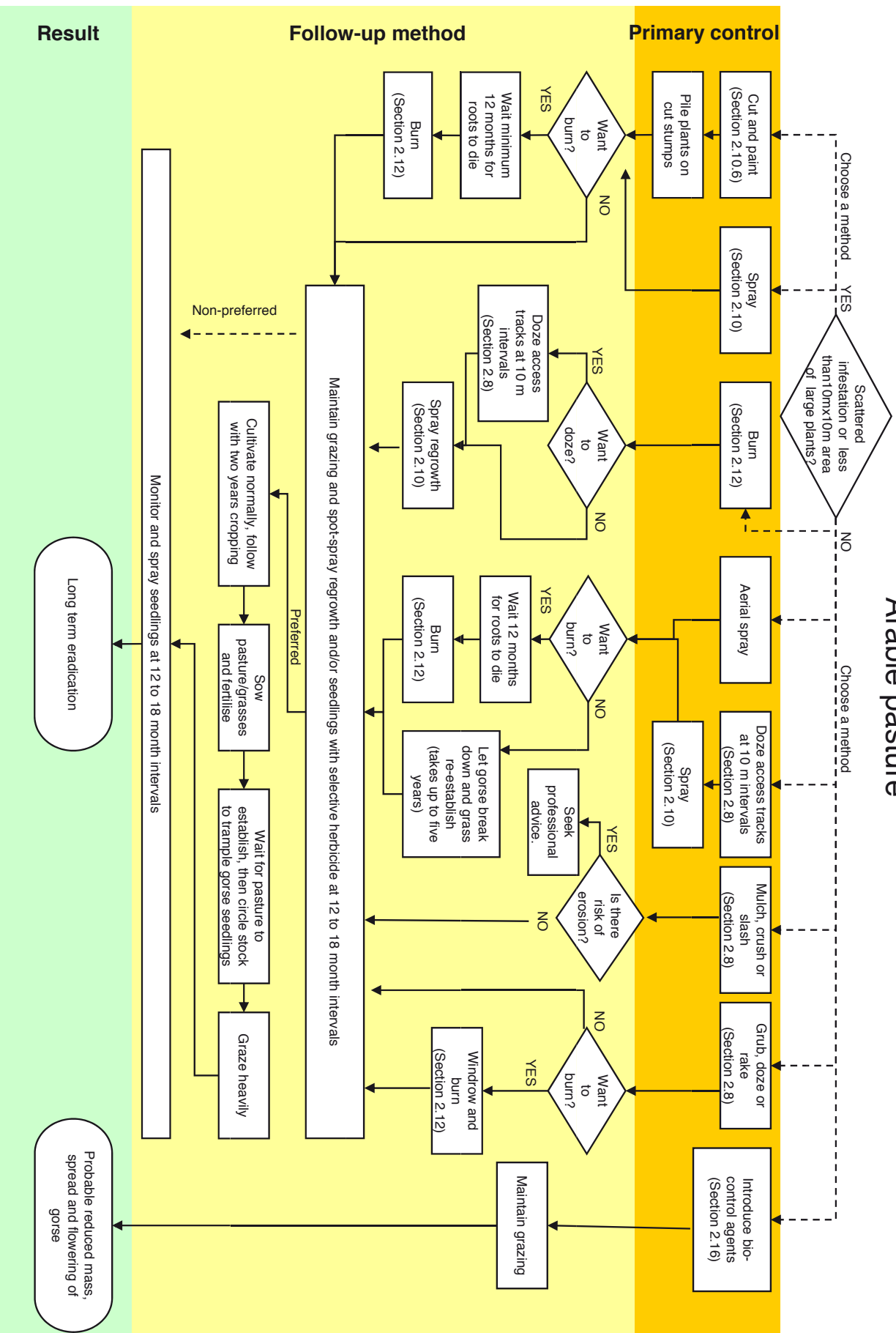
1. Munks SA. A guide to riparian vegetation and its management. Tasmania: Department of Primary Industry and Fisheries, 1996.

# Steep or stony pasture

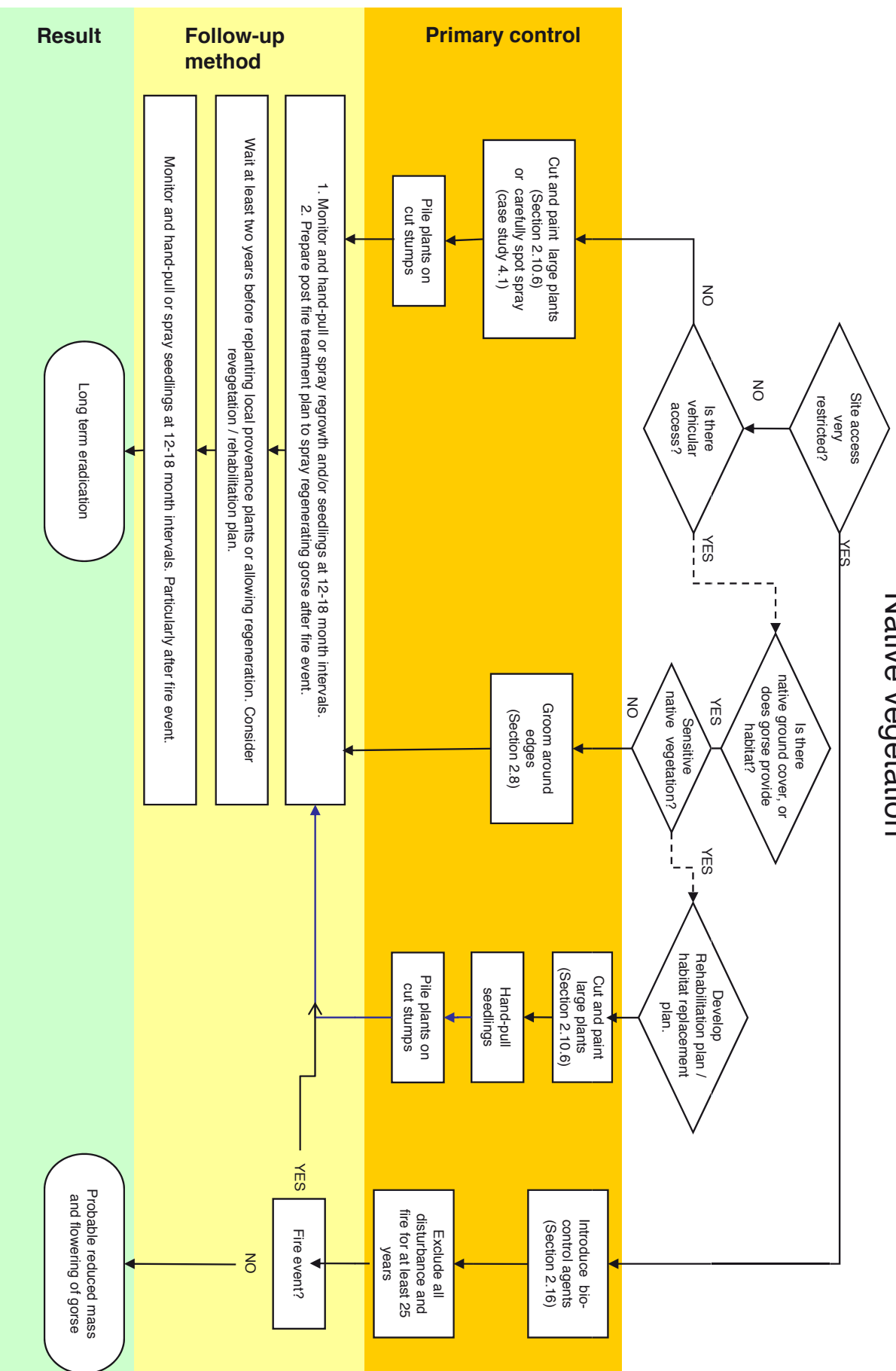




### Arable pasture



# Native vegetation

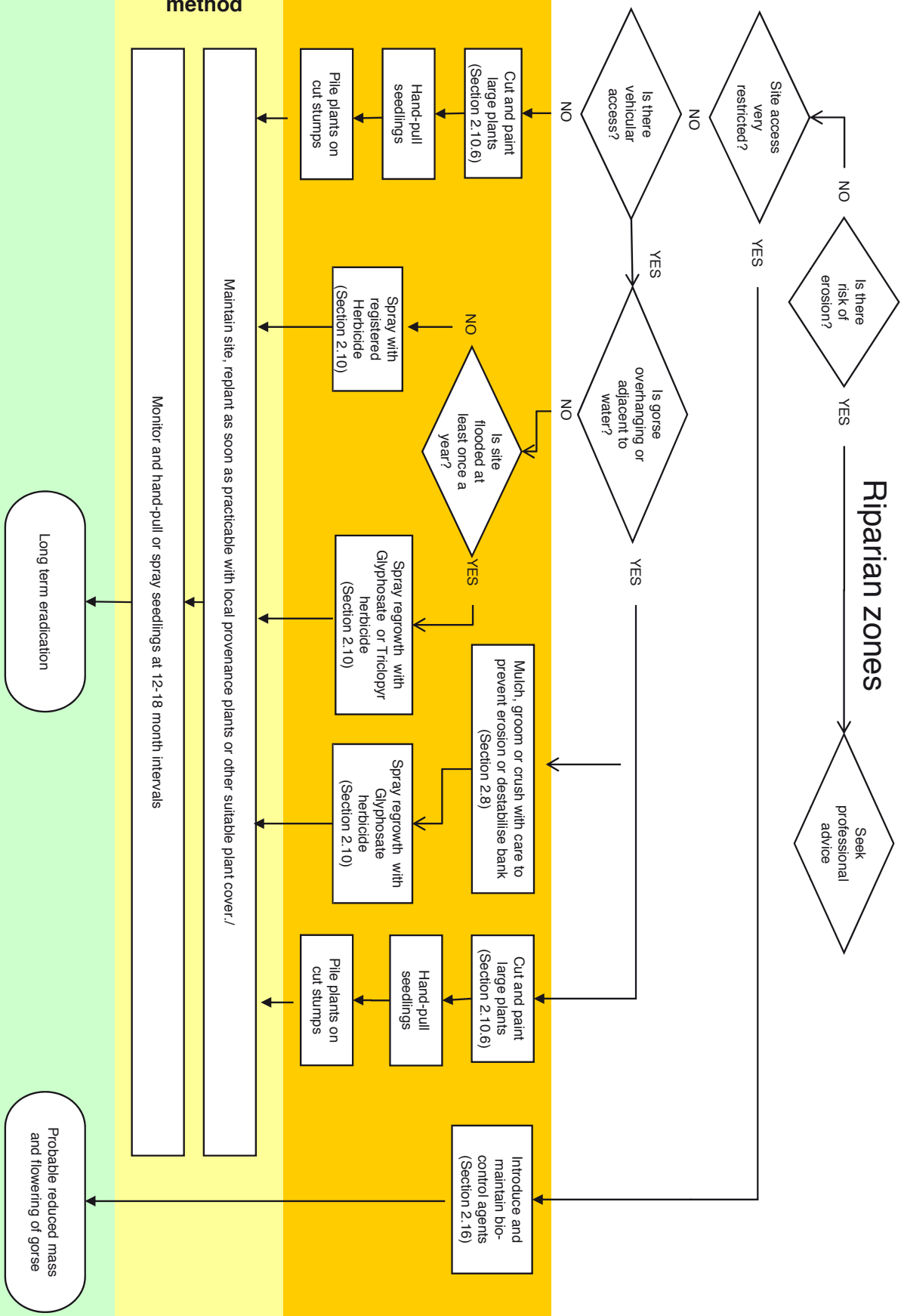




# CHAPTER 3

## Choosing a gorse control program for your situation

### Riparian zones



### Primary control

### Follow-up method

### Result



Tasmanian Institute of Agricultural Research

*Gorse biological control research*